

SITE OF ANGL0-SAXON CEMETERY.

Suffolk Institute of Archaeology and Natural History.

ANGLO-SAXON CEMETERY, HADLEIGH ROAD,
IPSWICH.

BY NINA FRANCES LAYARD, F.L.S.

IT has taken just upon a year, from January, 1906, to January, 1907, to examine the Anglo-Saxon Burial Ground, which was discovered at Hadleigh Road, Ipswich, and to arrive at the limits of the ancient cemetery.

Owing to the fact that work had to be found for a large number of the unemployed, it was determined to remove the slope on the one side of the road, and to fill up the depression on the other side, thus providing building sites. This work had continued for two months without anything out of the common having been observed, and many valuable relics must have been thrown away during these operations. A few skeletons only were reported, and these were reburied, after being pronounced of quite recent origin.

On a first visit to the spot in January, 1906, I noticed human bones protruding from the side of the cutting, but as the skeleton had already partly been removed, nothing was found with it. The clean condition of the red crag in which the bones lay, was sufficient proof

B

that the burials were of very early date, as there was little trace of organic discolouration in the surrounding earth. A second visit resulted in the unearthing of another skeleton, much decayed, beside which was the boss of an Anglo-Saxon shield, and this gave the clew to the true nature of the discovery.* A systematic examination was then made of every grave as it was found, with the result that treasures in the shape of pottery, glass, weapons, household utensils, brooches, necklaces of beads, &c., have been brought to light.

After having worked on the spot for several months, and being satisfied that I had come upon a rich and extensive find, I communicated the discovery to Mr. Packard, the chairman of the Ipswich Museum. The Committee agreed to take up the matter, and I continued my work after this, in connection with the Museum. The relics are now the property of the town, and may be seen in Christchurch Mansion, in the Park, at Ipswich.

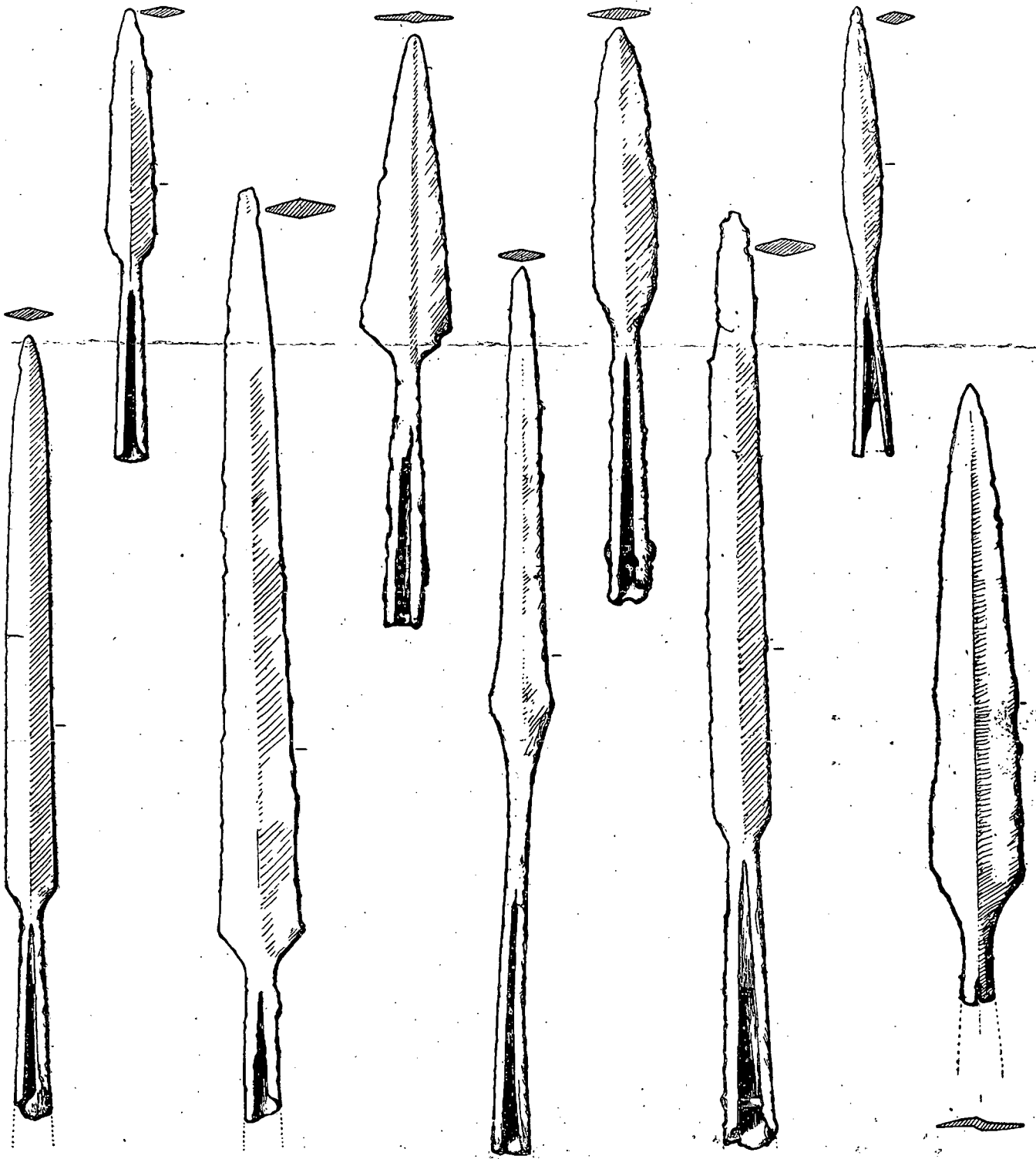
I have personally examined about 159 graves, and we may put the true number, including those lost to us, at probably 200.

The cemetery at its greatest length measured nearly 400 feet, and at its greatest breadth 150 feet, but its form was irregular. (Plate I.)†

As was the custom in Saxon burials, the dead were found in a horizontal position with the arms close by the side. Small remnants of garments preserved by the rust of brooch-pins or spear-heads, gave but the faintest idea of the clothes in which they were buried. (Plate III., fig. 2). With the men we almost invariably found the spear-head over either the right or left shoulder, the iron boss of the shield in various positions, but occasionally over the mouth, and the small knife at the girdle. Iron strike-lights, buckles of bronze or iron, small bronze tweezers, and iron rings at the girdle also occurred in these graves.

* I gratefully acknowledge the help given me by Sir John Evans and Dr. Laver, of Colchester, in the identification of these first discoveries.

† This was measured for me by Mr. Marfell, Borough Surveyor's Office, Ipswich and is marked on the Ordnance Survey Map.



SPEAR AND JAVELIN HEADS.

(Reproduced by kind permission of the Society of Antiquaries, Burlington House).

A rare find was a large ornamental bronze buckle, such as are dug up in ancient graves in France, but probably a unique discovery with Anglo-Saxon remains. (Plate iv., fig. 7). With the women were buried their jewelry, consisting of brooches, necklaces of beads, buckles, rings, silver pendants, &c., their household utensils such as iron pot-hooks, keys, and a spindle whorl (Plate iv., fig. 6; toilet requisites, including combs, &c. (fig. 3); with a small knife invariably worn at the waist.

Four glass drinking cups, two of a rich amber colour, and two of pale blue, were among the rarer finds. The latter were placed at the feet of a female skeleton.* The iron frame-works of two situlæ were also found. For what purpose these buckets were placed in the graves is at present an enigma.

Two Roman coins, one of Marcus Aurelius, 161 A.D., and one of Faustina his wife, were also among the graves. They may have been formerly attached to ornaments, but there was nothing to prove this. †

That the custom of cremation had not wholly ceased among these settlers, the finding of 24 urns proved. Those placed beside human skeletons were possibly food vessels, those buried alone contained human remains. The pottery is of an unusually rough description, only in one or two instances showing any sign of decoration, and then only the characteristic protuberances caused by the pressure of the thumb from within.

An absence of swords among the weapons is one of the peculiarities of this cemetery, as also is the entire absence of bone implements. The spear-heads and javelin-heads are of great variety, long and short, broad and narrow, indeed, in no two cases are they similar. (Plate II.) A very small spear-head was found beside a rough earthen-pot, which contained the remains of a child. It was possibly a toy weapon. It differs from the rest in the arrangement of the slit in the socket.

* Two other drinking vessels were taken from the field. One was broken, and the other sold to Clement Casley, Esq., who has presented it to Ipswich Museum.

† It may yet be discovered that these coins are of greater significance than that usually assigned to them.

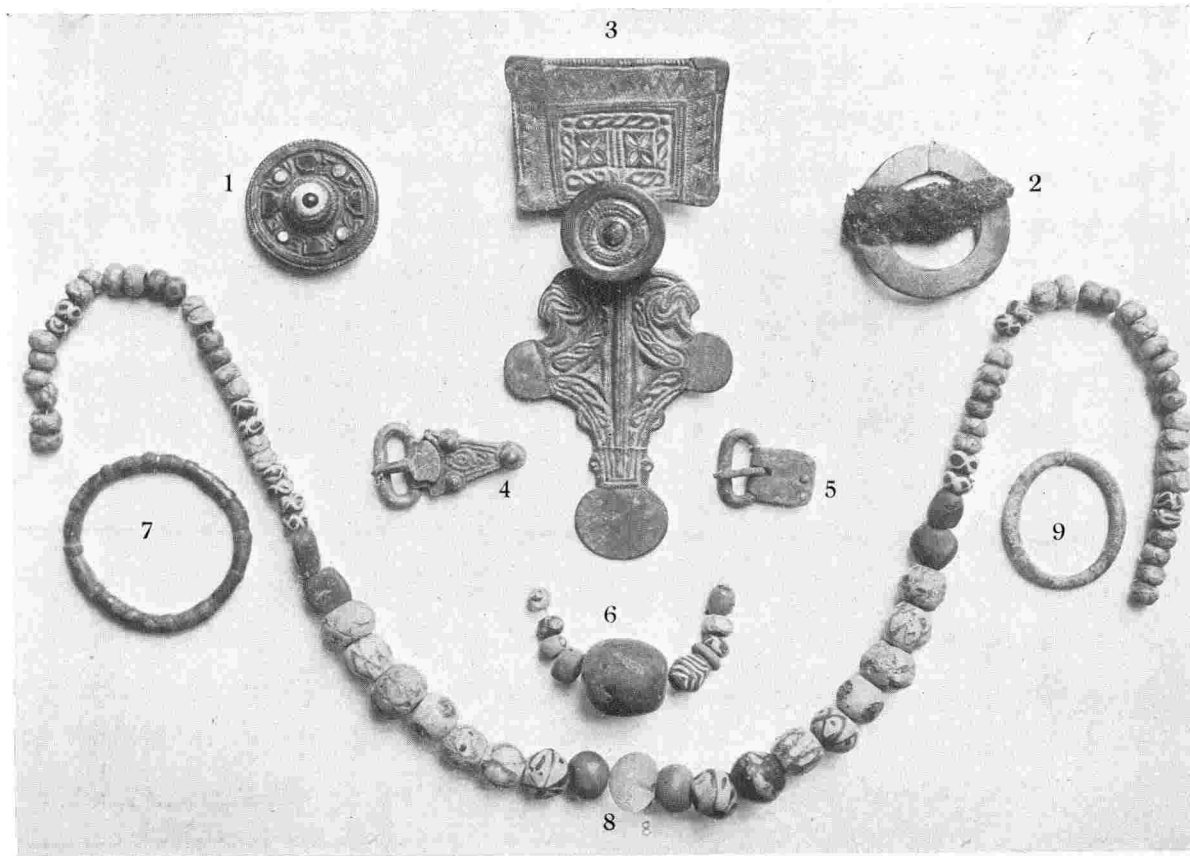
The finding of an iron axe of the La Tène type, quite unlike the accepted Anglo-Saxon weapon is puzzling, but it is possible that though found in proximity to the graves it did not belong to them.

The iron bosses which originally formed the centre of the shield were intended to protect the hand which grasped the handle beneath it. They include two of the rare conical form. Another has a silver stud on the point, and one is covered with hide.

Among the ornaments found beside female skeletons are eight large square headed brooches. They are of bronze with gilt beaten on to them (Plate III., fig. 3), and are decorated with quaint designs, among which is the head of a dragon open-mouthed. In one instance this is clearly seen, in the rest it is repeated in so modified a form as to be scarcely recognisable. An example of the square headed-fibula, with an ornamental stud on the bow, is an exceedingly rare find in England. (Plate III., fig. 3). Another had been similarly decorated, but has lost the stud.

Two circular jewelled brooches, of the Kentish type, deserve special attention, as they are not often to be met with in East Anglia. They are also of bronze, gilded, and set with garnet, and shell or ivory. (Plate III., fig 1; Plate IV., fig. 8). In one of these a fine ruby coloured carbuncle is set in a boss of shell in the centre. The other was equally perfect when found, but I had the mortification of seeing the shelly boss dissolve into impalpable dust as I lifted it from the grave. Fortunately the jewel dropped into the central cavity, and with it its background of hatched gold foil, which was placed behind to enhance its brilliance. This has now been mounted on plaster of Paris.

The question as to the position occupied by these brooches has been solved for us by the fact that the chin bones under which they were found were stained with verdigris. In all cases where possible I have preserved these bones and placed them beside the brooches. Other



ORNAMENTS FROM ANGLO-SAXON CEMETERY.

stained bones on which ornaments were found have also been kept, as they are important evidence as to the use to which buckles, &c., were put. For instance, a small bronze buckle, found attached to the ear bone of a male skeleton, suggested that head-gear of some kind had been in use. Another buckle, of beautiful design, was found on the small arm bone, which in this instance lay across the waist. (Plate III., fig. 4).

Ring brooches were found in pairs, placed one below the other on the breast. Like the old Highland brooches they are peculiar in having no catch for the pin, and are attached by the simple method of forcing a portion of the garment through the ring, putting the pin through it, and straightening out the material. The pin would then rest on the opposite rim of the brooch, being kept in position by the tension of the dress. (Plate III., fig. 2; Plate IV., fig. 1).

The cemetery was unusually rich in beads, thirty-six necklaces being found in the graves of women, containing in all about 900 beads. These are of great variety of colour and pattern, and consist of glass, vitreous paste, crystal, and amber. As the thread or wire on which they were hung has in all cases perished, it was no easy matter to find the beads, especially as they were coated with damp earth. Our plan was, if possible, to start working from the feet of the skeleton upwards, and when we reached the neck-bone to carefully sift the earth, after picking out all the beads that could be found in situ. Samples of these beads have been represented in colours in *Archæologia*, and are here reproduced by the kind permission of the Society of Antiquaries, Burlington House. (Plates v., vi., vii.)

The beads show an unusual variety of colour and design, and it was felt that for purposes of reference every pattern should be illustrated. For this reason the artist has re-arranged the necklaces so that every different bead may be introduced, and has omitted a large number of the amber beads which are present in most of them.

In the show cases in which they are now placed in Christ Church Mansion, each necklace includes all the beads belonging to separate graves. Judging from the fact that a large central bead was usually found, and that many of the others are in duplicates, we may perhaps presume that the arrangement of the beads was symmetrical, and this idea I have followed out in setting up the necklaces. An example may be seen in the longest necklace on plate v., as this has been left unaltered by the artist; and again in the third from the top on plate vi. This small necklace has serpents portrayed in white on the red barrel-shaped beads. Another example, which consists of a large silver ring on which is threaded one amber bead, is a unique find, and was probably worn by a man. (Plate iv., fig. 5).

Mr. Reginald Smith is of opinion that the contents of the graves point to the probability that the site is that of a Pagan cemetery of the 6th century. Although the skeletons were placed with the feet pointing in a north-easterly direction, this orientation is not necessarily a sign of Christian influence, as it is well known that the position of Anglo-Saxon graves was often determined with special regard to the view which the site commanded.

It is a matter for deep regret that no complete record can be given of the number of graves which the cemetery contained, as the work was interrupted on Dec. 1, when we had reached a rich part of the cemetery. Before we could resume it a number of graves had been destroyed, and the unrecognised relics thrown away. Probably 30 graves, with their contents, were thus lost to us.

The following is a list of the relics found during our excavations.

42 Spear-heads, including a toy lance or arrow-head.

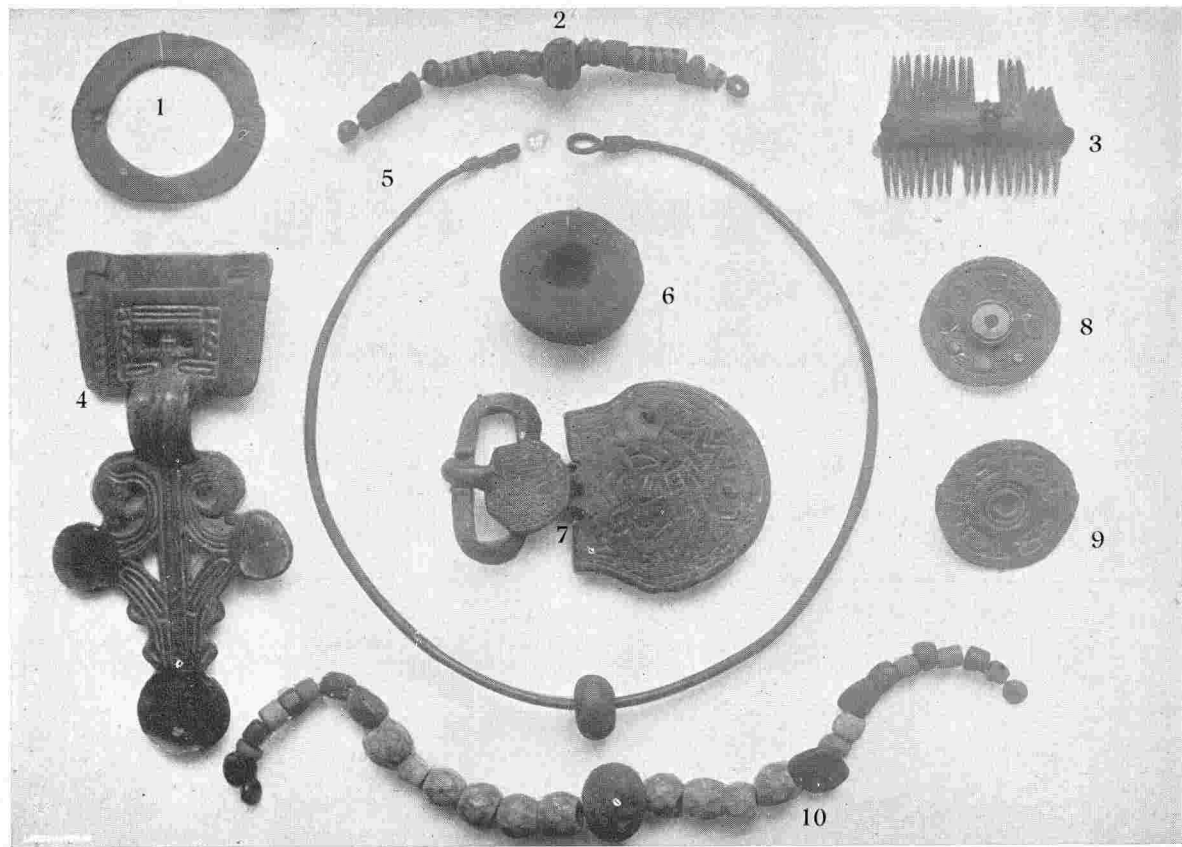
72 Knives.

19 Bosses of shields.

7 Handles of bosses.

36 Necklaces of beads.

(Also 3 single beads worn by men).



ORNAMENTS FROM ANGLO-SAXON CEMETERY.
(Reproduced by kind permission of the Proprietor of "THE QUEEN.")

- 1 Necklace composed of a silver ring with 1 amber bead.
- 20 Brooches.
- 1 Large bronze buckle (Frankish type).
- 1 Smaller ditto, ornamented with bronze bosses.
- 16 Small bronze buckles.
- 1 Bronze key.
- 1 Iron key.
- 8 Iron pot-hooks, &c.
- 2 Double-toothed combs.
- 24 Urns, with and without bones.
- 4 Glass drinking cups.
- 2 Pairs of tweezers.
- 4 Small rings of twisted wire.
- 2 Ditto of bronze.
- 3 Small silver pendants.
- 1 Ring for pendant.
- 2 Girdle rings (bronze).
- 5 Strike-a-lights.
- 1 Square fragment of bronze ornament.
- 10 Iron buckles (small).
- 4 Iron rings.
- 2 Frame-works of situlæ.
- 1 Roman Coin of Marcus Aurelius, A.D. 161.
- 1 Ditto of Faustina (same date).
- 1 Spindle whorl.

Besides miscellaneous scraps of iron objects, such as chains, chatelaines, &c., of which a full account is given in the contents of the graves.

I have to thank Sir John Evans, Mr. Charles Hercules Read, Mr. Reginald Smith, Professor Macalister, and Dr. Laver, of Colchester, for kind help and information given during my researches.

CONTENTS OF THE GRAVES FOUND AT HADLEIGH ROAD,
IPSWICH.

- Grave 1. }
 " 2. } Skeletons thrown away by unemployed workmen.
 " 3. }
 " 4. }

1906.

Jan. 4.

Grave 5.—Fragments of skeleton.

Two amber glass drinking cups, found at a depth of $1\frac{1}{2}$ foot.*

Jan. 11.

Grave 6.—Part of skull and bones; nothing with it; found at a depth of $3\frac{1}{2}$ feet.

Jan. 19.

Grave-7.—Male skeleton, feet to north-east; depth of grave $2\frac{1}{2}$ feet. An iron boss was close beside the skull; the skull was much deformed through damp and pressure, the forehead being almost entirely flattened out; the teeth were ground down nearly to the fangs; wisdom tooth large and strong.

Jan. 23.

Grave 8.—Male skeleton, depth of grave 2 feet 8 inches; three yards to the left of Grave No. 7; iron spear-head and knife.

Jan. 23.

Grave 9.—Male skeleton, almost perfect, feet to north-east, with legs doubled up; two bosses of shields, one with large button at the top; fragments of brown-black urn and long bent, spear-head.

Jan. 29.

Grave 10.—Female skeleton; necklace of eight beads; depth of grave 2 feet 8 inches.

Feb. 7.

Grave 11.—Part of human skeleton; small knife, bronze buckle, portion of shank; depth $3\frac{3}{4}$ feet.

Feb. 8.

Grave 12.—Skeleton with upper part of skull much flattened, feet to north-east; silver ring necklace, with one amber bead; also small knife; sex unknown.

Feb. 12.

Grave 13.—Skeleton, feet to north-east; nothing with it.

Feb. 12.

Grave 14.—Male skeleton, feet to north-east; with spear, knife, and boss of shield, with tinned button.

* These were found by the unemployed workmen and brought to me. I was told that two other glass vessels had been taken off the field, one of which was sold and one broken.

Feb. 13.

Grave 15.—Male skeleton, with small spear-head and knife; strike a-light, ornamented with cable pattern.

Feb. 14.

Grave 16.—Male skeleton, with large spear-head and knife.

Feb. 15.

Grave 17.—Female skeleton, feet to north-east; necklace of twenty-two beads (mostly amber); knife; square-headed fibula; ring fibula, ornamented with dots and circles.

Feb. 18.

Grave 18.—Female skeleton, feet to north-east; small knife, four beads, one of amber, one of pottery, and two of blue glass melon-shaped.

Feb. 19.

Grave 19.—Female skeleton, feet to north-east; circular fibula (Kentish type), set with garnets and shell or ivory; the chin-bone was covered with verdigris from the fibula which was placed below it; small double-toothed comb on left side of skull; small iron chatelaine ring with iron pendants much broken; large iron pot-hook.

Feb. 21.

Grave 20.—Male skeleton, feet to north-east, with knife only.

Feb. 23.

Grave 21.—Male skeleton, feet to north-east; spear-head, boss of shield, and knife.

Feb. 23.

Grave 22.—Male skeleton, feet to north-east, with small spear-head on left side, boss of shield and knife; boss near right shoulder, and rough black-brown urn about half a foot higher on right of skull.

Feb. 27.

Grave 23.—Female skeleton; chin-bone and neck-bone discoloured with verdigris; small knife and necklace of twenty-eight beads.

Feb. 27.

Grave 24.—Female skeleton, feet to north-east; square-headed brooch, top missing; side of chin-bone discoloured with verdigris; necklace of eleven beads, one being of crystal.

Mar. 7.

Grave 25.—Five skeletons found while I was ill; spear-head and broken boss only found during this time.

Mar. 16.

Grave 26.—Male skeleton, feet to north-east; large ornamental buckle in three pieces (Frankish type) lying beside upper leg bone, which was discoloured with verdigris.

Mar. 19.

Grave 27.—Male skeleton, feet to north-east; broken spear-head.

April 11.

Grave 28.—Male skeleton ; boss of shield, two knives, and small buckle.

April 20.

Grave 29.—Female skeleton, feet to north-east ; a large square-headed fibula in very perfect condition, with ornamental stud on bow ; also necklace of five beads.

April 23.

Grave 30.—Female skeleton ; necklace of thirty beads ; ring fibula.

April 24.

Grave 31.—Remains of skeleton ; sex unknown ; one bead only found with it.

April 26.

Grave 32.—Male skeleton ; spear-head.

May 7.

Grave 33.—Bones of skeletons disturbed ; broken knife and one crystal bead.

(Our excavations did not commence again till August 21st, 1906).

Aug. 21.

Grave 34.—Urn only, in fragments.

Aug. 22.

Grave 35.—Male skeleton, very much gone to pieces, feet to north-east ; large spear-head ; broken boss ; small knife with sheep's horn beside it. The boss was on the right of the skull, spear-head on the left, knife and horn at waist.

Aug. 23.

Grave 36.—Male skeleton gone to pieces ; broken spear-head with point upwards, and broken boss.

Aug. 23.

Grave 37.—Skull only, of female, flattened sideways ; depth of grave 3 feet 5 inches ; seven beads ; chin-bone stained with verdigris.

Aug. 23.

Grave 38.—Urn almost whole, containing fragments of bone, found alone at depth of 3 feet 6 inches.

Aug. 24.

Grave 39.—Female skeleton, feet to north-east ; two ring brooches (one plain, one decorated with scratched lines) arranged one below the other on the breast ; bronze buckle near the upper brooch ; chin and neck bones verdigriised ; necklace of fourteen beads including two of crystal ; iron ring on left side of waist with small knife across the middle of it and adhering to it.

Aug. 24.

Grave 40.—Male skeleton gone to pieces ; broken spear and knife.

Aug. 24.

Grave 41.—Female skeleton, feet to north-east; one square-headed brooch; necklace of nine beads; one knife; half of an iron ring.

Aug. 25.

Grave 42.—Female skull, bones gone to pieces; depth of grave 3 feet 5 inches; necklace of ten beads, including very large amber with hole worn into keyhole shape; two ring brooches placed on breast, one below the other; one has material adhering to the pin, the other without pin.

Aug. 27.

Grave 43.—Male skeleton, feet to north-east; one long broken spear-head, point upwards.

Aug. 28.

Grave 44.—Fragment of female skull; depth of grave 3 feet 5 inches; necklace of fourteen beads, including one with ring and dot ornamentation, with serpent portrayed on it; also two barrel-shaped beads in glass paste with serpents in white.

Aug. 30.

Grave 45.—Male skeleton, feet to north-east, without accessories.

Aug. 30.

Grave 46.—Female skeleton, feet to north-east; depth of grave 3 feet; broken ring brooch, one foot below head; necklace of eleven beads of vitreous paste.

Aug. 30.

Grave 47.—Fragment of urn only.

Aug. 30.

Grave 48.—Skull only, two knives, one broken.

Sept. 3.

Grave 49.—Male skeleton, in fragments, with small spear only.

Sept. 3.

Grave 50.—Skeleton in fragments; small knife and iron ring.

Sept. 3.

Grave 51.—Skeleton in fragments; small knife only.

(These three skeletons were about 3 feet apart, that is to say, the feet of one 3 feet from the head of the next. Between two of them an urn was found, nothing in it.)

Sept. 4.

Grave 52.—Female skeleton; depth of grave 4 feet 6 inches; the iron fittings of a bucket (situla) found near the feet; ring and knife at waist; one square-headed brooch with top lost; necklace of eighty-eight beads, thirty-six being coloured, fifty-two of amber.

Sept. 5.

Grave 53.—Female skeleton, feet to north-east. Necklace of thirty-four beads, including two flat amber ones; ring brooch; broken knife and broken urn.

Sept. 6.

Grave 54.—Skull only, of male. One bead at neck, of opaque blue-black glass with white serpent; fine spear-head, perfect, reaching $\frac{1}{2}$ foot above the skull.

Sept. 6.

Grave 55.—Fragments of skull, with knife in two halves.

Sept. 6.

Grave 56.—No bones visible; one broken knife.

Sept. 6.

Grave 57.—Female skull, bones disappeared; necklace of thirty-six beads, many of them double; three amber beads found beside arm, so probably a bracelet; small knife near to them.

Sept. 7.

Grave 58.—Male skull; spear-head; boss of shield; knife; iron strike-a-light; also handle of boss with canvas on it.

(The boss is of the rare conical shape. The strike-a-light and knife were together at the waist, the spear-head leaning against the skull.)

Sept. 10.

Grave 59.—Female skull, other bones disappeared depth of grave 3 feet 6 inches; one square-headed brooch with top lost; one bronze buckle; one small iron buckle; knife; and coin of Marcus Aurelius, A.D. 161. The full inscription of this coin would be CONCORDIA AVGVSTOR. TR. POT. XV. COS. III. S. C.

Sept. 11.

Grave 60.—Male skeleton, feet to north-east. Large spear-head apparently on right of skull, point upwards; boss over the mouth, with teeth beneath it; pair of tweezers.

Sept. 11.

Grave 61.—No bones visible; broken spear-head in two halves, point upwards; beside it was half a peck of wood ashes. This seemed to be in a large pit.

Sept. 11.

Grave 62.—No bones visible; one knife; one broken buckle; one broken iron pot-hook.

Sept. 12.

Grave 63.—Female skeleton; necklace of six beads, no amber.

Sept. 13.

Grave 64.—Female; no skull visible; necklace of twenty-two beads, many small and tube-like, red, white, and blue, with large centre bead; small iron buckle and broken knife.

Sept. 13.

Grave 65.—Bones disappeared; knife, hook, and broken tweezers.

Sept. 13.

Grave 66.—Female; bones mostly disappeared; necklace of eleven beads, all amber but two; knife and small iron buckle.

Oct. 8.

Grave 67. Small portion of skull; three beads (two small pipe-shaped, with large centre bead); two nails and small broken knife.

Oct. 8.

Grave 68.—Fragments of skull; one marble beside it.

Oct. 9.

Grave 69.—Skeleton almost disappeared; small knife near skull.

Oct. 9.

Grave 70.—Worked further down slope on north-west side. Skeleton in good preservation lying north east on back, limbs straight out, arms straight down side; forehead pressed down over lower jaw; upper leg bone 18 inches, lower leg bone 15 inches. Scrap of iron buckle only found.

Oct. 9.

Grave 71.—Another skeleton in fragments, buried above the last; nothing with it.

Oct. 9.

Grave 72.—Skeleton flung out by unemployed; one horn core.

Oct. 10.

Grave 73.—Male skeleton, bones scattered; broad short spear-head.

Oct. 10.

Grave 74.—Female skeleton in good preservation; necklace of twenty beads spindle-whorl of red pottery; broken knife; scrap of ivory and two nails.

Oct. 11.

Grave 75.—Male; depth of grave 4 feet 6 inches; flat broad spear-head; two knives; small bronze buckle, with shank adhering to ear-bone, which was stained with verdigris.

Oct. 11.

Grave 76.—Female skeleton gone to pieces; urn in fragments; near to it twenty-eight beads; knife 2 feet below them; good bronze buckle; depth of grave $3\frac{1}{2}$ feet.

Oct. 12.

Grave 77.—Male and female; urn whole when found, but went to pieces; close to it twenty-eight beads; scrap of bone only; perfect spear-head; knife and bronze buckle with shank.

Oct. 13.

Grave 78.—Female skeleton disappeared; two beads; fragments of small iron chatelaine and small knife.

Oct. 13.

Grave 79.—Leg bones of male skeleton; fragment of spear-head; small knife.

Oct. 14.

Grave 80.—Parts of skeleton; nothing found.

Oct. 14.

Grave 81.—Fragments of skeleton; nothing found.

Oct. 15.

Grave 82.—Parts of male skeleton; small spear-head, perfect.

Oct. 15.

Grave 83.—Male skeleton, appeared to be facing south and to be doubled up; one spear-head.

Oct. 15.

Grave 84.—Male skeleton in good preservation; short broad spear-head; small knife; fragment of iron, use unknown.

Oct. 18.

Grave 85.—Female skeleton, feet to north-east; depth of grave 3 feet 4 inches; two bowls of blue-green grass, very shallow, found at feet; two small double-toothed combs on either side of feet; small buckle at waist, and pot-hook hanging from waist and lying across the body to the left hand; two finger-rings or earrings made of twisted wire.

(I sketched this skeleton before the pot-hook was removed.)

Oct. 19.

Grave 86.—Skeleton feet to north-east; legs doubled back; depth of grave about 4 feet; nothing with it.

Oct. 19.

Grave 87.—Male skeleton, feet to north-east; fine delicately-made spear-head on left side, with point over shoulder; knife.

Oct. 19.

Grave 88.—Male skeleton, feet to north-east; spear-head on left side; boss either quite over mouth or immediately below it.

Oct. 22.

Grave 89.—Skeleton gone to pieces, but feet to north-east; small knife only.

Oct. 24.

Grave 90.—Fragments of skeleton; nothing with it.

Oct. 24.

Grave 91.—Fragments of female skeleton; necklace of ten beads, including large amber in centre with hole worn to key-hole shape; circular jewelled brooch (Kentish type) set with garnet and shell or ivory, perfect except for the setting of the central garnet, which went to powder; cable rim round the brooch; portion of bronze girdle pendant.

The large amber bead showed signs of verdigris on one side.

Oct. 24.

Grave 92.—Fragments of male skeleton, facing north-east; spear-head and knife; four beads with it (I never before found more than one bead with a male skeleton); fragments of pot.

Oct. 25.

Grave 93.—Male skeleton; two large knives and iron ring.

Oct. 25.

Grave 94.—Male skeleton; boss; fragments of knife and other iron; also pot-hook.

Oct. 26.

Grave 95.—Female skeleton, feet to north-east; necklace of fifty-four beads; bronze girdle pendant.

Oct. 27.

Grave 96.—Broken urn full of bones; no skeleton with it.

Oct. 29.

Grave 97.—Broken urn only.

Oct. 30.

Grave 98.—Female skeleton, feet to south-west; fragments of wood as if either box or coffin had been here; square-headed brooch of unusual type, with stud missing from the centre; necklace of one hundred and eight beads, including one crystal and large amber; ornamental bronze ring; pot-hook of crook shape; and two small knives.

Oct. 30.

Grave 99.—Small knife only.

Oct. 30.

Grave 100.—Male skeleton disappeared; large spear-head; small knife; bronze buckle with shank.

Nov. 1.

Grave 101.—Female skeleton disappeared; necklace of twenty-eight beads all glass paste; hook and fragment like small iron handle.

Nov. 2.

Grave 102.—Female skeleton, facing north-east; square-headed fibula, perfect, with all the silver plates complete.

(This was lying with the narrow end upwards on the breast. A portion of the chin-bone is stained green from contact with it. Close to the brooch was a necklace of ninety-four beads, including glass of melon shape vitreous paste, and amber. Adhering to the hinge of the brooch was a blue glass bead which I have replaced, as it was dislodged when cleaning the brooch. Among the beads were two small circular silver pendants, small knife, and small iron buckle.)

Nov. 5.

Grave 103.—Male skeleton, facing north-east, but with legs bent round to north; large knife at waist; on left side very elegant spear-head raised at an angle of 45 degrees, the tip of the spear was only 1 foot below the surface; depth of grave 3 feet.

Nov. 5.

Grave 104.—No skeleton; small knife only.

Nov. 5.

Grave 105.—Skeleton, feet to north-east, with empty urn standing on left side of the neck; fragment of small knife.

Nov. 10.

Grave 106.—Female; no skeleton, only a scrap of bone; pot-hook or key, and knife.

Nov. 13.

Grave 107.—Skeleton, feet to north-east; bones mostly disappeared; small knife and buckle.

Nov. 13.

Grave 108.—Male skeleton, spear-head raised at angle of 20 degrees; and knife.

Nov. 13.

Grave 109.—Small urn (no bones); beside it miniature spear-head.

Nov. 13.

Grave 110.—Skeleton, apparently a female, facing north-east, but head and legs twisted northward.

Nov. 14.

Grave 111.—Female skeleton, feet to north-east; depth of grave 4 feet 6 inches; necklace of ten beads; large urn in fragments on left of skull; broken iron buckle attached to portions of iron belt studded with bronze.

Nov. 19.

Grave 112.—Female skeleton, almost disappeared; could trace position of bones by the white powder; feet to north east; necklace of sixteen beads and one small knife.

Nov. 19.

Grave 113.—Male skeleton, almost disappeared; a few teeth; small javelin-head.

Nov. 20.

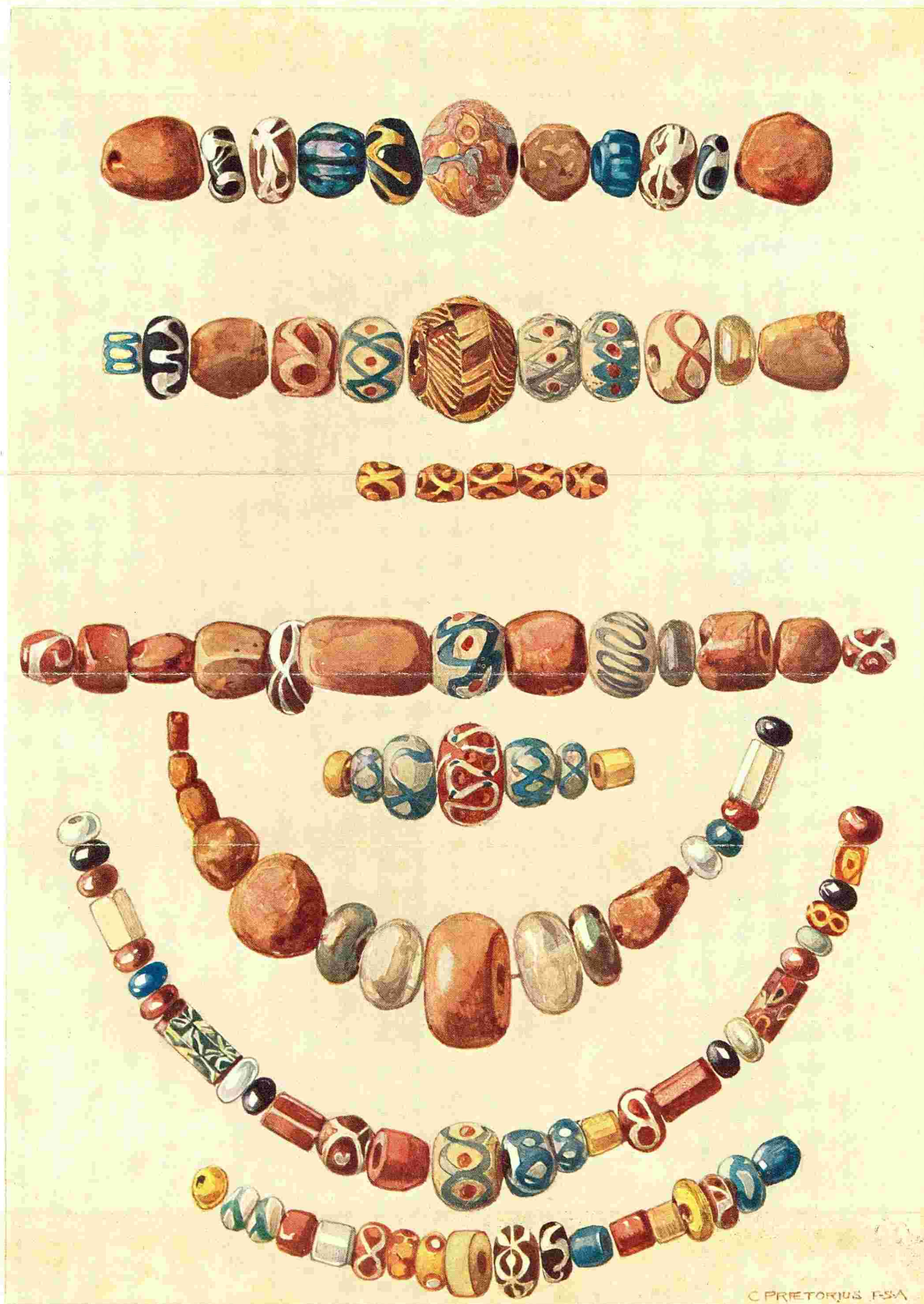
Grave 114.—Skeleton gone to pieces; knife only.

Nov. 20.

Grave 115.—Grave opened by the unemployed; tall conical boss of extremely rare type taken out whole, but broken by them in attempting to clean it; also handle of boss.

Nov. 22.

Grave 116.—Male skeleton, feet to east; large ribbed spear-head on right side, not reaching higher than the shoulder; depth of grave 2 feet.



ANGLO-SAXON BEAD NECKLACES FOUND AT IPSWICH. (1)

(Reproduced by kind permission of the Society of Antiquaries, Burlington House.)

Nov. 22.

Grave 117.—No skeleton; large urn full of bones, which went to pieces when moved; depth of grave $1\frac{1}{2}$ foot. This was about 20 feet from an urn previously found.

Nov. 24.

Grave 118.—Male (?) skeleton, feet to nearly north; ornamented bronze buckle to lower arm-bone which was across the waist (the bone was discoloured with verdigris); fragment of broken knife; tiny bronze buckle with shank on the leg.

Nov. 24.

Grave 119.—Skeleton to pieces; broken knife only.

Nov. 26.

Grave 120.—Fragment of skull, feet to east; broken knife; fragment of urn.

Nov. 26.

Grave 121.—Flattened skull with bones, feet to north-east; teeth of ox above.

Nov. 26.

Grave 122.—Skeleton, feet to north-east; very large skull; scrap of knife only; depth of grave 3 feet 6 inches.

Nov. 26.

Grave 123.—Female skeleton disappeared; necklace of thirty-nine beads and one broken; small iron buckle; depth of grave 2 feet.

Dec. 1.

Grave 124.—Male skeleton; teeth of young person, large and strong; large perfect spear-head on right side, the point reaching 8 inches above the skull; good-sized urn on left of skull, nothing in it (it is ornamented); broken knife and pieces of iron and broken strike-a-light; two tiny bronze buckles; depth of grave 3 feet 6 inches.

Dec. 1.

Grave 125.—Female; no urn visible, but a few burnt bones and cinders. Among them a lower jaw bone blackened by burning. Adhering to it beneath the chin was a circular brooch of rare pattern and two beads. These were part of a necklace of twenty-seven beads; small broken ring brooch; also small broken knife; depth of grave 4 feet.

Dec. 1.

Grave 126.—Nothing but skull facing north-east, with teeth of young person; broken knife; depth of grave 4 feet.

The complete record of the graves is here interrupted, as our workmen were taken off this part of the cemetery, and 180 unemployed set to work upon it, with the result that numerous graves were destroyed, and no relics found. Meanwhile we worked far to westward of the field, where we found broken urns only.

Dec. 3.

Grave 127.—Broken urn only.

Dec. 3.

Grave 128.—Ditto.

Dec. 3.

Grave 129.—Ditto.

Dec. 3.

Grave 130.—Ditto.

These urns were placed in a row about 1 foot apart at a depth of 2 feet 6 inches. They all contained human bones.

Dec. 4.

Grave 131.—Another broken urn found near the last; the earth about it much blackened. I watched the unemployed at work and saw three skeletons turned out, as follows:

Dec. 4.

Grave 132.—Male skeleton, feet to north-east; spear-head on right and very good knife on left; depth of grave 4 feet.

Dec. 4.

Grave 133.—Male skeleton; spear-head; conical boss broken to pieces; depth of grave 3 feet 6 inches.

Dec. 4.

Grave 134.—Skeleton to pieces; broken knife.

Dec. 5.

Grave 135.—Male skeleton with strike-a-light and broken knife.

Dec. 10.

Grave 136.—Skeleton, feet to north-east; nothing with it but a quantity of ashes.

Dec. 10.

Grave 137.—Urn with child's remains.

Dec. 10.

Grave 138.—Male skeleton, feet to north-east; spear-head on right shoulder with point above the head; boss of shield on right side, close to skull; knife near waist, with iron buckle beside it.

Dec. 12.

Grave 139.—Large urn alone.

Dec. 12.

Grave 140.—Broken knife only; skeleton disappeared.

Dec. 12.

Grave 141.—Skeleton; nothing with it.

Dec. 12.

Grave 142.—Large broken urn containing human bones; no skeleton.

Dec. 12.

Grave 143.—Skeleton; nothing with it.



C. PRÆTORIUS F.S.A.

ANGLO-SAXON BEAD NECKLACES FOUND AT IPSWICH. (†)

(Reproduced by kind permission of the Society of Antiquaries, Burlington House).

Dec. 12.

Grave 144.—Ditto.

Dec. 12.

Grave 145.—Broken knife only ; skeleton disappeared.

Dec. 12.

Grave 146.—Female skeleton, with crook-shaped pot-hook or key.

These eight skeletons found on December 12th appeared to have been disturbed.

Dec. 19.

Grave 147.—Female skeleton, feet to north-east ; teeth of aged person ; thirty-one beads found below the chin ; small bronze ring near the beads ; broken knife and broken iron buckle, with fragment of belt with bronze studs at the waist.

Dec. 19.

Grave 148.—Female skeleton gone to pieces ; pot-hook still attached to iron ring at waist ; broken knife.

Dec. 19.

Grave 149.—Fine spear-head found by the unemployed.

Jan. 2.

Grave 150.—Skeleton only.

Jan. 4.

Grave 151.—Skeleton ; knife only.

Jan. 7.

Grave 152.—Skeleton, feet to north-east, gone to pieces ; small knife only.

Jan. 7.

Grave 153.—Skeleton, feet to north-east, gone to pieces ; knife only.

Jan. 16.

Grave 154.—Female skeleton, feet to north-east, but with head and legs pushed by soil to creep in a northerly direction ; below the chin is a necklace of thirty beads, and three rings of twisted wire among the beads ; small iron buckle at waist ; teeth of tolerably young person.

Jan. 17.

Grave 155.—Good spear-head and knife brought to me by a man who found them beside a skeleton last year.

Jan. 17.

Grave 156.—Skeleton gone to pieces, but facing north-east ; small bronze buckle with shank, and broken knife ; both on hip.

Jan. 21.

Grave 157.—Skeleton entirely disappeared ; five beads ; broken wire ring among them.

Jan. 21.

Grave 158.—Skeleton almost disappeared ; links of iron chain ; staple ; iron fragment studded ; nail.

Jan. 31.

Grave 159.—Skeleton ; nothing found with it.